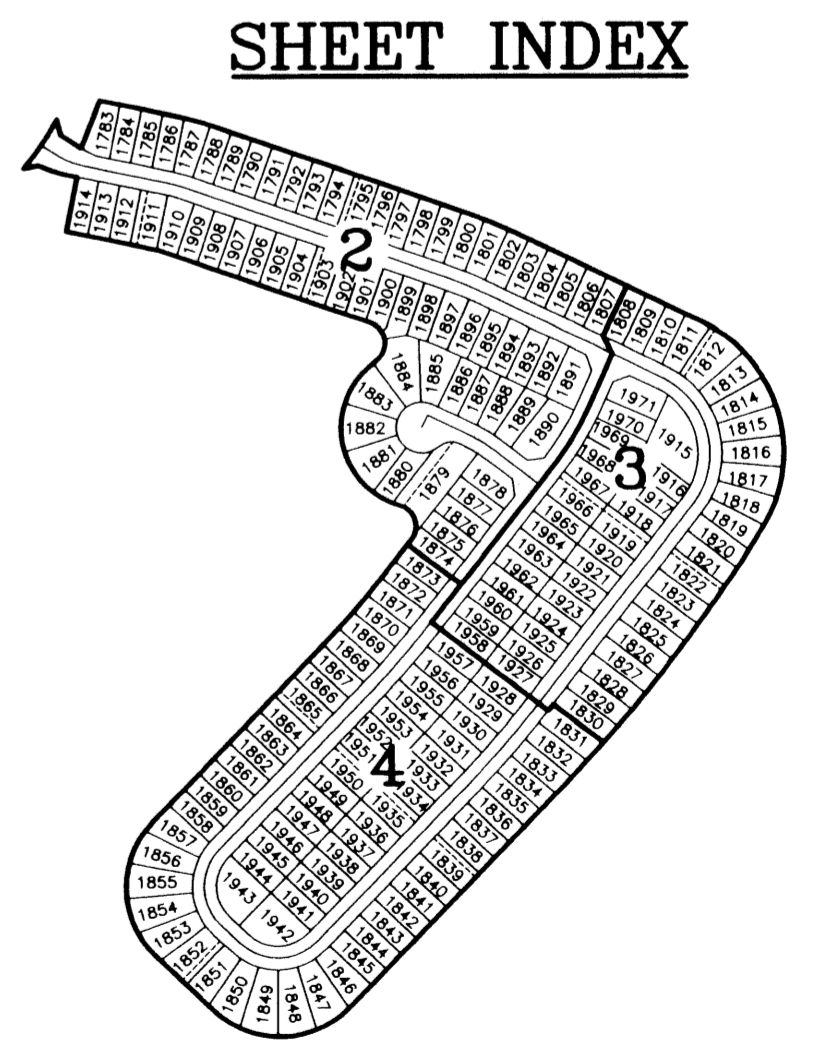
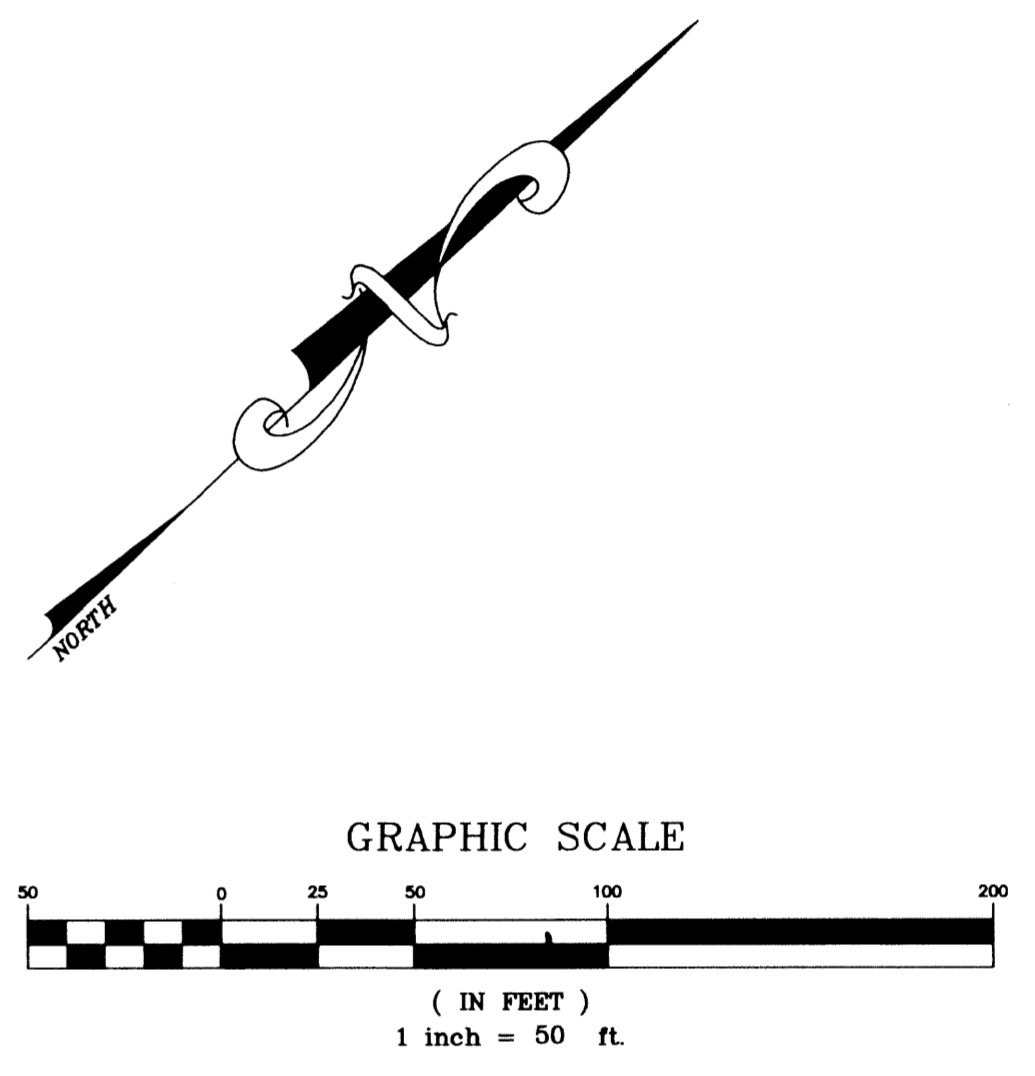
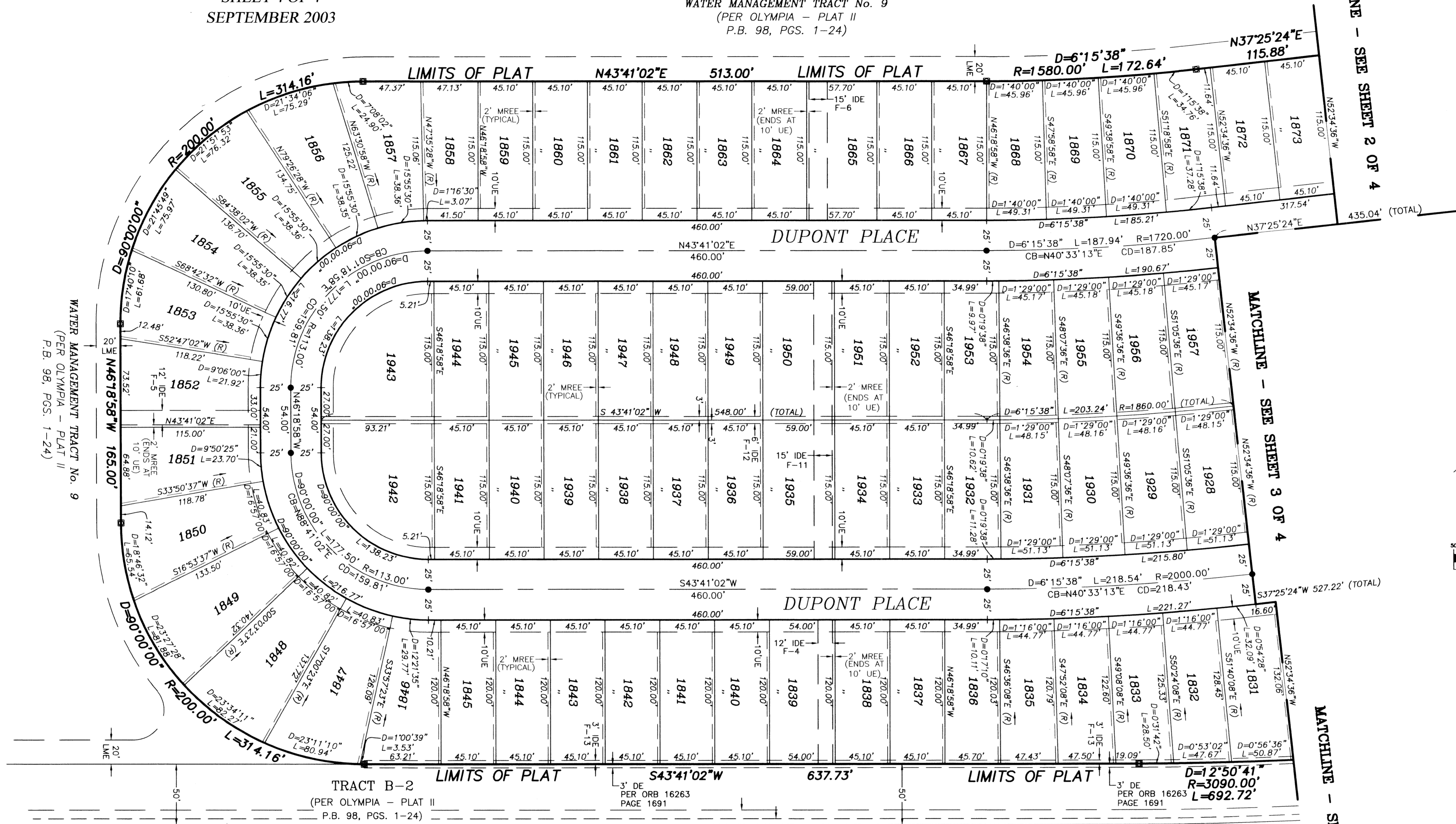


OLYMPIA - PLAT II, BLOCK 'F' REPLAT


BEING A REPLAT OF BLOCK 'F', OLYMPIA - PLAT II, AS RECORDED IN PLAT BOOK 98, PAGES 1 THROUGH 24 OF THE PUBLIC RECORDS OF PALM BEACH COUNTY, FLORIDA, AND BEING IN PORTIONS OF SECTIONS 17 AND 18, TOWNSHIP 44 SOUTH, RANGE 42 EAST, VILLAGE OF WELLINGTON, PALM BEACH COUNTY, FLORIDA

SHEET 4 OF 4
SEPTEMBER 2003

WATER MANAGEMENT TRACT No. 9
(PER OLYMPIA - PLAT II
P.B. 98, PGS. 1-24)



- LEGEND:**
- D = DELTA (CENTRAL ANGLE)
 - L = LENGTH
 - R = RADIUS
 - PSM = PROFESSIONAL SURVEYOR AND MAPPER
 - PLS = PROFESSIONAL LAND SURVEYOR
 - LAE = LIMITED ACCESS EASEMENT
 - LMAE = LAKE MAINTENANCE ACCESS EASEMENT
 - MREE = MAINTENANCE AND ROOF EAVE EASEMENT
 - UE = UTILITY EASEMENT
 - IDE F-1 = INTERIOR DRAINAGE EASEMENT No. F-1
 - ORB = OFFICIAL RECORD BOOK
 - P.B. = PLAT BOOK
 - PG. = PAGE
 - (R) = RADIAL
 - ☉ = SET PERMANENT REFERENCE MONUMENT "LB 4318"
 - = PERMANENT CONTROL POINT "LB 4318"
 - LME = LAKE MAINTENANCE EASEMENT (PER PB 98, PGS 1-24)
 - CB = CHORD BEARING
 - CD = CHORD DISTANCE
 - PBC = PALM BEACH COUNTY
 - ESMT = EASEMENT

| | |
|---|---|
| OLYMPIA - PLAT II, BLOCK 'F' REPLAT | |
|  | SHEET NO. 4 of 4 |
| NICK MILLER, INC. 2560 RCA BLVD., STE 106, PALM BEACH GARDENS, FL 33410 TEL: 561.627.5200 FAX: 561.627.0983 www.nickmillerinc.com D.B.P.R. BUSINESS LICENSE No. 4318 | SCALE: 1"=50' DATE: SEPTEMBER 2003 JOB NO. 1008.123 FILE: 1008.123.dwg |